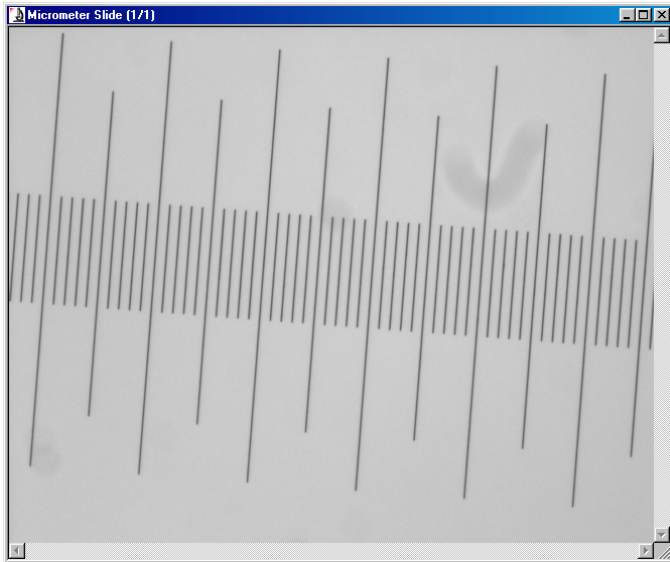


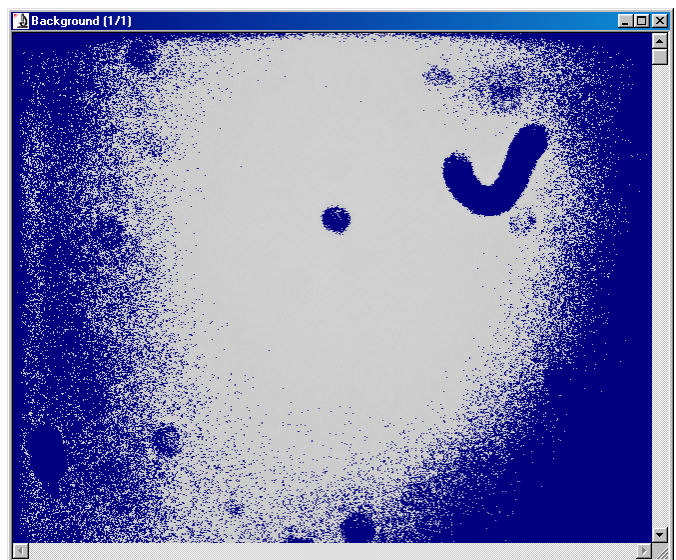
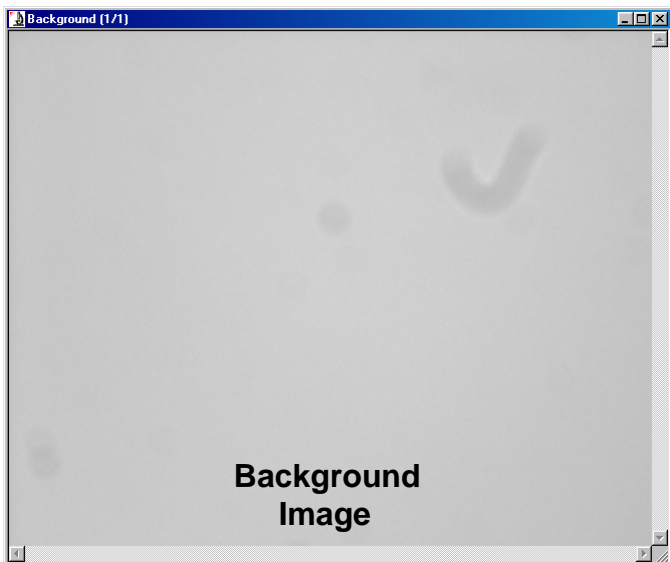
Background Correction

This image of a microscope stage micrometer illustrates some typical problems:

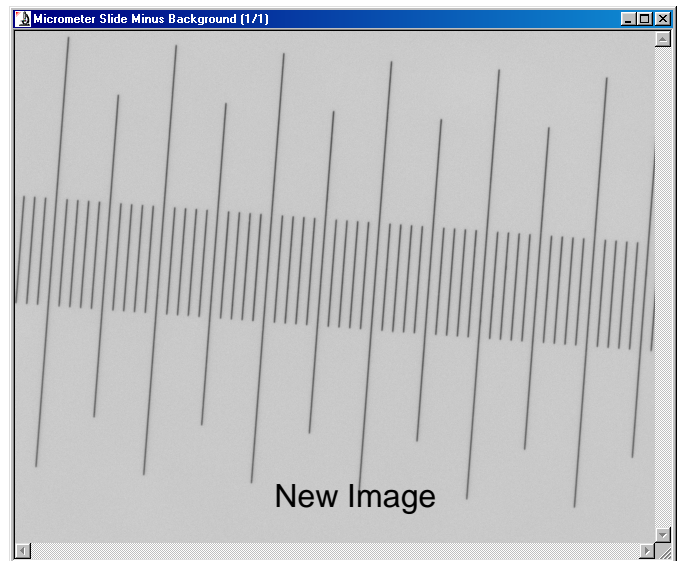
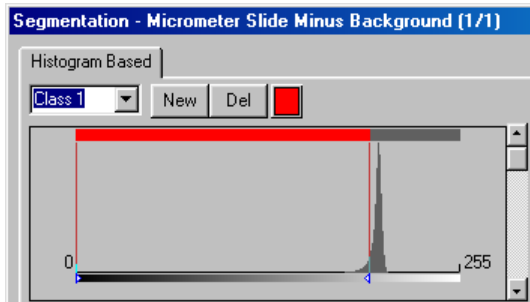
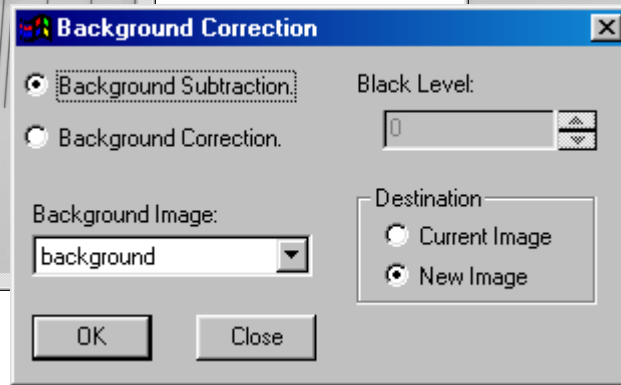
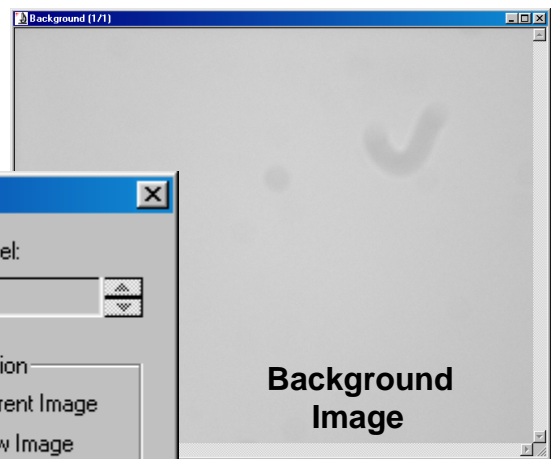
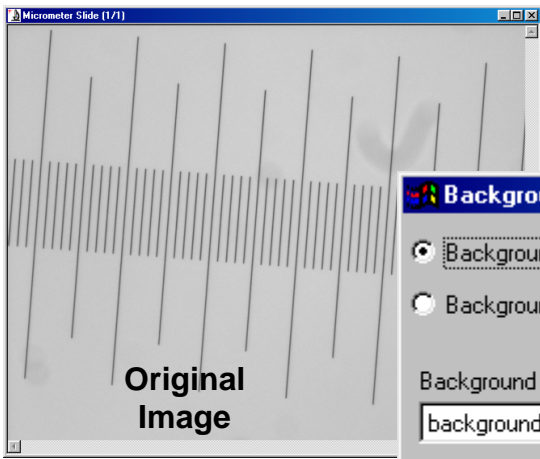
- there is noise (dust) in the image.
- the illumination is not even (the image *looks* evenly illuminated, but it is darker around the edges).



One way to correct image problems is to use Image-Pro's Background Subtraction. Here the microscope stage was moved to a blank portion of the slide and a background image was captured. The dirt in the optics is obvious to the eye, but the uneven illumination is not apparent (the image *looks* evenly illuminated, but it is darker around the edges).



Adjusting threshold values using the background image reveals that the field is not evenly illuminated. A background subtraction will eliminate the dust and correct for the uneven background.



The effects of the Background Subtraction are illustrated in the two images below after setting identical threshold values for the Original Image and the Image Minus Background. The dust has been eliminated and the illumination is now even.

