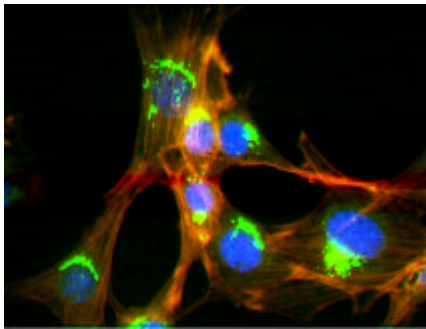
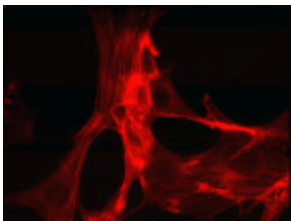


**Co-Localization of  
 Fluorescent Probes**

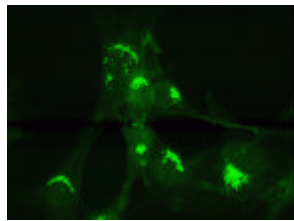


Color Composite

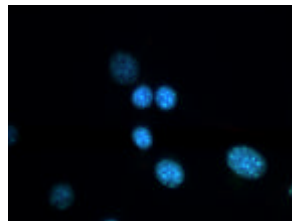
A color image can be generated by combining and registering 3 individual fluorescent images using Image-Pro's Color Composite feature. This color image may be used to measure the co-localization between fluorescent probes. In this instance, the co-localization of FITC and Rhodamine staining is measured.



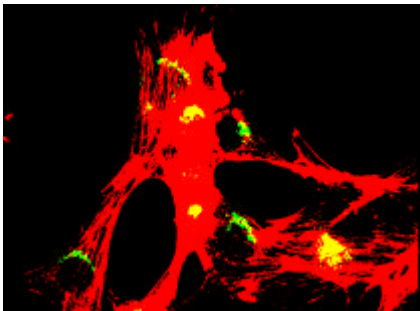
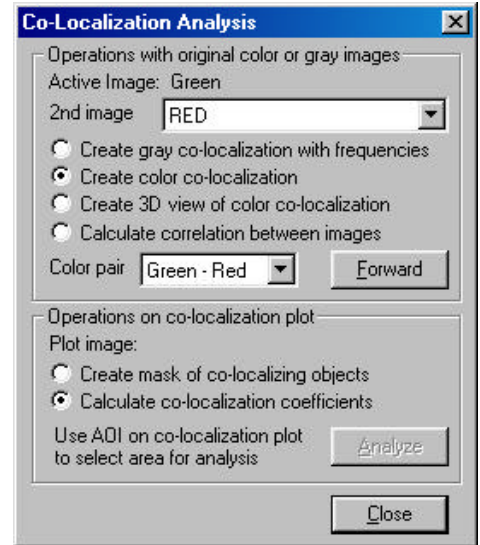
Rhodamine (Red)



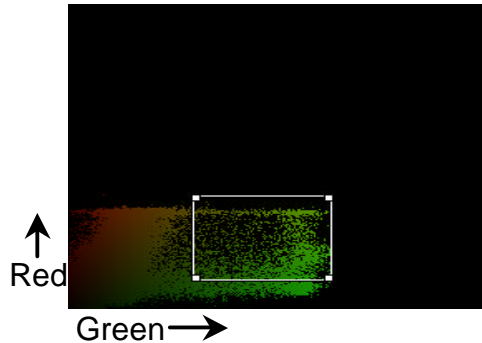
FITC (Green)



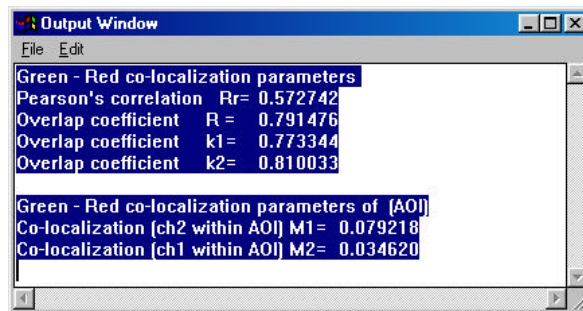
DAPI (Blue)



Co-localization displayed in yellow



Binary image of co-localized Green-Red Color pair



Output Window showing Green-Red co-localization parameters for the image as a whole and for the AOI shown above.

Reference: Manders, Verbeek, and Aten. J. Microsc. 169:375-382 (1993)