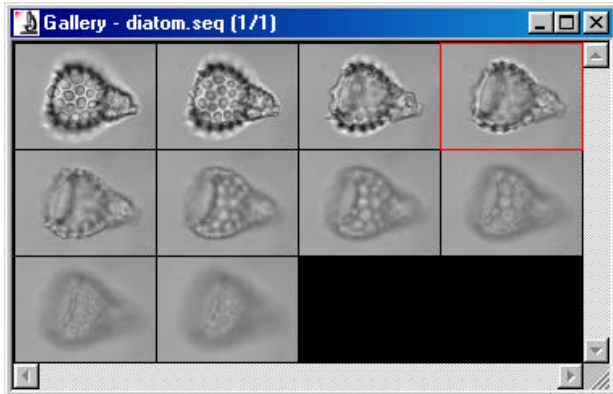
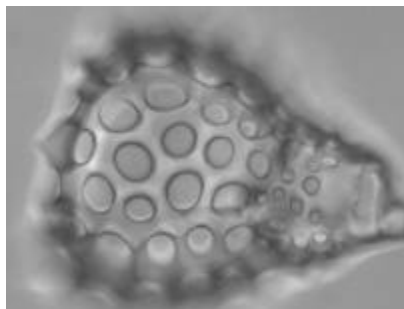
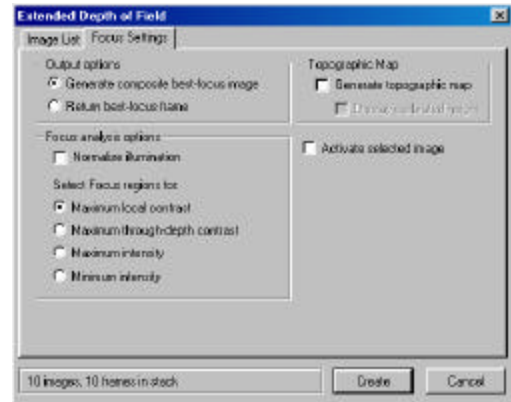
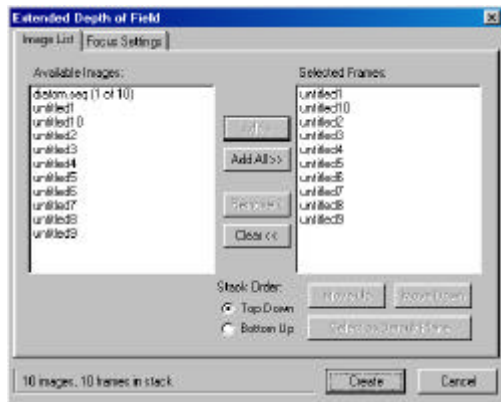


**Multi-Plane Focus**

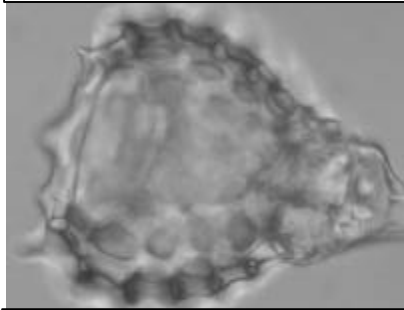


Extended Depth of Field or Multi-Plane Focus is a feature found in Image-Pro that uses a Z-stack of images and generates a new, composite image based on selected focus regions.

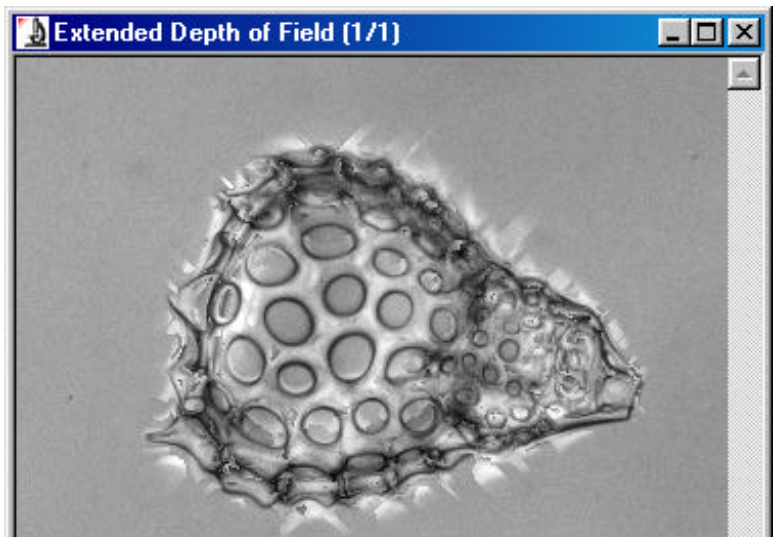
This series of images was acquired using Scope-Pro to automatically capture images at different focal planes through its interface with a motorized microscope stage.



First image in series



Fourth image in series



Composite best-focus image with focus regions selected for Maximum local contrast