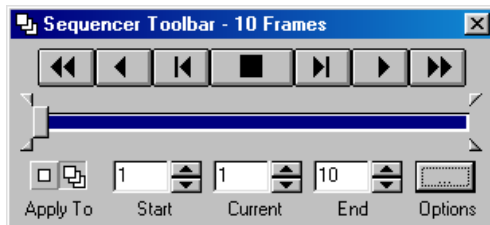
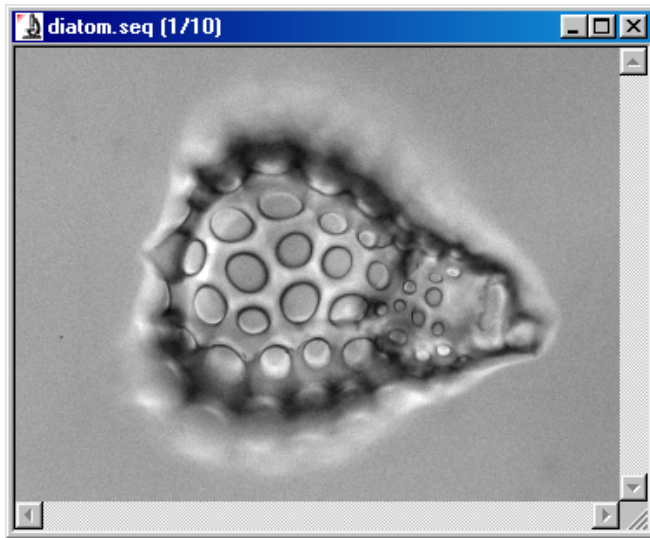


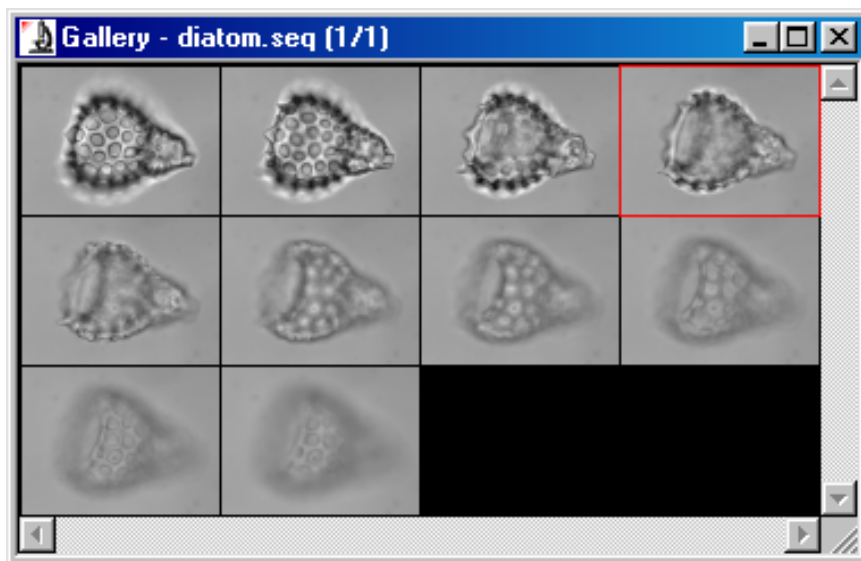
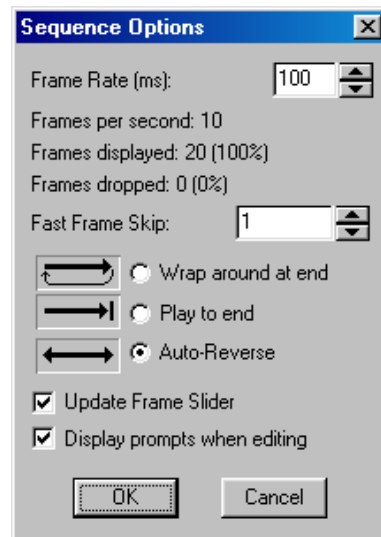
Sequence Tools and Sequence Gallery



You can scroll forward and backward through the group of images manually or automatically. You can select the starting and ending frames to play only part of the sequence, skip frames, edit the sequence, and save it (.seq, .tif, .ipw, .avi).

Image-Pro allows you to create and edit multiple-frame image workspaces, called sequences. Each sequence consists of individually captured image frames stored together in one workspace.

You have the ability to Cut, Copy, Paste, Append, Merge sequences, Extract frames from the sequence, and perform image operations to single frames or have them applied to the entire sequence of images.



Sequence Gallery

In the Sequence Gallery, the live image in the sequence is always highlighted in the gallery by a box around the thumbnail image. The live image can be changed by selecting any of the gallery images. Clicking on any image thumbnail in the Gallery will also advance that image to that image plane when the sequence is playing.