

FROM IMAGES TO ANSWERS®

CoolSnap™-Pro_{cf} Digital Kits

Out-of-the-Box Image Capture and Analysis Solution in MONOCHROME and COLOR

Overview

CoolSNAP-Pro_{cf} Digital Kits combine Media Cybernetics' award-winning Image-Pro® Family imaging software with the high-resolution CoolSNAP-Pro_{cf} color or monochrome digital camera to produce a fully integrated solution for image capture, archival, analysis, measurement, and reporting.

Don't risk valuable time and money by attempting to use poorly integrated software and hardware components. We have applied the knowledge and experience gained from the development of hundreds of capture drivers to fine-tune the CoolSNAP-Pro_{cf} for maximum performance. Achieve image quality you may not have thought possible at a price that is easy on your budget.

CoolSNAP-Pro_{cf} Camera Features

- 1392 x 1040 pixel resolution
- 20Mhz readout speed
- Fast digital preview typically at 10-12 frames per second, but can reach 15 frames per second in an optimized computing environment
- Monochrome cameras offer 12-bit dynamic range, 1.4 megapixel resolution, and up to 8x8 binning
- RS-170 output available for more demanding preview needs (supports autofocus and Z controllers)
- 12-bit chip, cooled 5°C below ambient
- Choice of Bayer color or monochrome camera
- Color cameras provide independent auto exposure options for one, two, or all three color channels

CoolSNAP-Pro_{cf} Digital Kit Benefits

- Sequential image capture allows for time, motion, or volume studies
- Fast installation and setup – software, camera driver, camera, interface card, and cable are fully integrated
- Ideal for brightfield or fluorescence applications - includes built-in default and user definable camera setup files to quickly switch between configurations
- Capture and processing can be automated when used with Image-Pro Plus' macro commands
- Scope-Pro® Plug-in module can be added to control your stage and microscope accessories



CoolSNAP-Pro_{cf} CRI Micro*Color Filter Kit

- Combines monochrome CoolSNAP-Pro_{cf} camera with CRI Micro*Color Filter RGB Filter to provide option of using gray scale or color images
- Fully integrated Image-Pro driver
- 3-Shot color accuracy
- Filter slides for mono capture
- Built-in .65x Optical Coupler creates large field of view

FROM IMAGES TO ANSWERS[®]

CoolSNAP-Pro_{cf} Camera Specifications

| FEATURE | CoolSNAP-Pro _{cf} Color Camera | CoolSNAP-Pro _{cf} Monochrome Camera |
|-----------------------|---|--|
| CCD Sensor | Sony ICX205 with Bayer color mask | Sony ICX205 monochrome version |
| CCD Type | Interline, progressive scan | Interline, progressive scan |
| CCD Format | 1392 x 1040, 4.65 micron pixels | 1392 x 1040, 4.65 micron pixels |
| Digitizer | 12-bit @ 20MHz w/ Primary Point Dig(tm) | 12-bit @ 20MHz w/Primary Point Dig(tm) |
| Cooling | TEC cooled to 5 degrees below ambient | TEC cooled to 5 degrees below ambient |
| Interface | PCI interface card | PCI interface card |
| Camera Power | Provided by interface card | Provided by interface card |
| Readout modes | B/W focus and color | Region of interest and 2x2 binning |
| Dark Current | < 2 e/p/s @ 20°C | < 2 e/p/s @ 20°C |
| I/O | TTL expose out, RS-170 out | TTL expose out, RS-170 out |
| Dimensions | 4.5" x5"x2.5" (1.9 lbs) | 4.5" x5"x2.5" (1.9 lbs) |
| Software interface | Image-Pro driver | Image-Pro driver |
| Shutter | Electronic shutter | Electronic shutter |
| Camera window | IR blocking window (700nm cutoff) | Broadband window |
| Safe C-mount depth | 0.47 in. (11.9 mm) | 0.47 in. (11.9 mm) |
| Flange focal distance | 0.69 in. (17.5 mm) | 0.69 in. (17.5 mm) |

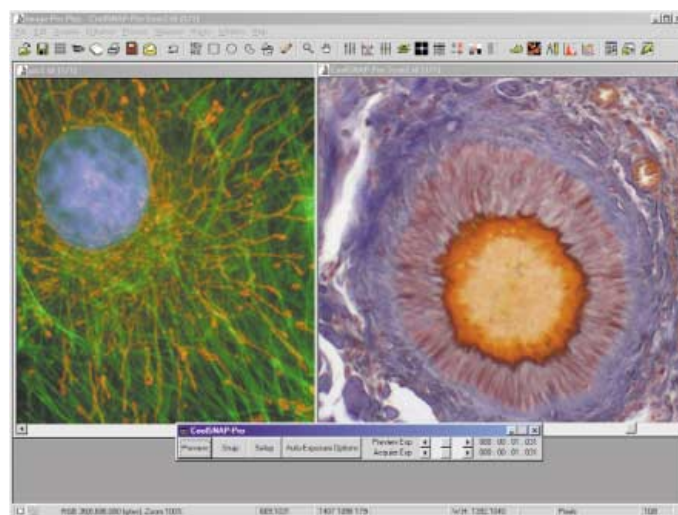
Bundled with Image-Pro Software

The Image-Pro Family software series reflects the maturity of over 20 years of development, evolution, and user feedback. Our products are backed by an experienced team of software and imaging professionals. Every part of our products, from the interface to individual measurements, is tested for reliability and functionality.

Image-Pro[®] EXPRESS ■ **Image-Pro[®] Express**
 Perfect for basic imaging or for image capture stations, Image-Pro Express offers numerous capture and enhancement options. Includes an easy upgrade path to Image-Pro Discovery or Image-Pro Plus.

Image-Pro[®] DISCOVERY ■ **Image-Pro[®] Discovery**
 More advanced than Image-Pro Express, Image-Pro Discovery offers added measurement and analysis capabilities. Includes an easy upgrade path to Image-Pro Plus.

Image-Pro[®] PLUS ■ **Image-Pro[®] Plus**
 The ultimate imaging software package, Image-Pro Plus includes all of the functionality of Image-Pro Discovery along with added analysis tools and the ability to write customized macros and plug-ins.



Quickly capture high-resolution images with the CoolSNAP-Pro_{cf} camera and analyze with easy-to-use Image-Pro software

**Our Worldwide Dealer Network is There to Assist You.
 For a Dealer In Your Area, Contact us Today!**

Media Cybernetics, Inc.
 8484 Georgia Avenue, Suite 200
 Silver Spring, MD 20910 USA
 Phone: +1.301.495.3305
 Fax: +1.301.495.5964
Email: info@mediacy.com
Web: www.mediacy.com

South America: Phone: +55.11.4427.7803
 Fax: +55.11.4427.9527
Europe: Phone: +31.715.730.639
 Fax: +31.715.730.640
Asia Pacific: Phone: +65.6245.4965
 Fax: +65.6245.4967

CoolSNAP-Pro_{cf}
DIGITAL KIT
 An Integrated Solution


MediaCybernetics[®]
 From Images to Answers[®]