



# THE INTELLIGENT IMAGE INFORMATICS SOLUTION



**Fast and Easy To Use...**

## Day-to-Day Operations

IQbase supports simple and intuitive workflow with an interface that allows you to easily archive, manage, and document your work.

- Drag and drop single images or volumes of images and data into IQbase.
- Archive directly from Image-Pro® Plus.
- Retrieve images and data quickly, with single-click functions and queries.
- Facilitate efficient collaboration.
- Work in your language: English, German, French, Spanish, or Chinese.

## Lab Managers, Principal Investigator

With IQbase, you'll spend less time managing images and more time on your projects.

- Never repeat research due to lost data.
- Eliminate separate spreadsheet logs and paper notebooks.
- Look at archived images and related data simultaneously.
- Access data at all levels.
- Mine new knowledge from existing images and data.



**Saves Time and Money...**



**Expandable and Flexible...**

## IT Professionals

The simple, yet elegant architecture of IQbase enables it to grow as your project or organization grows.

- Interoperability levels for desktops, workgroups, and entire enterprises.
- Compatible with Oracle®, DB2®, MS-SQL®, and other types of databases.
- Scale records nearly infinitely.
- Start with the version that fits now and update or add seats later.
- Maintain security with password access levels.

**THE REVOLUTIONARY WAY  
TO ARCHIVE, MANAGE, AND  
EXTRACT KNOWLEDGE FROM  
ALL OF YOUR IMAGES AND  
ASSOCIATED DATA – FROM  
DESKTOP TO ENTERPRISE**

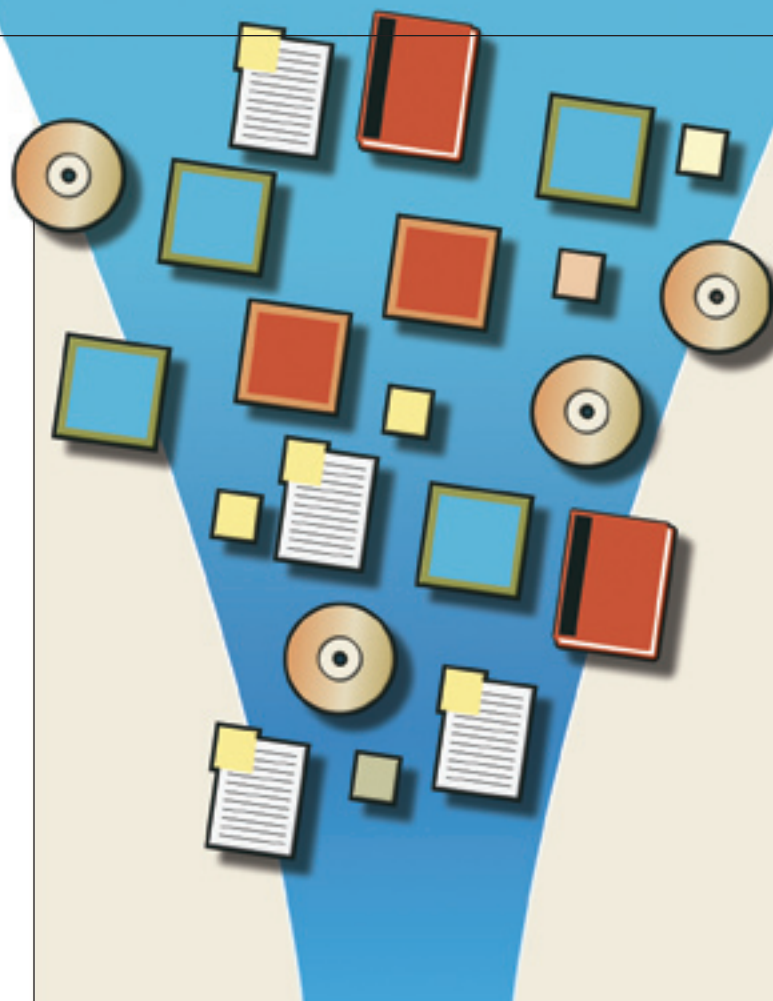
**IQbase is the ideal solution** for lab managers, principal investigators, quality control managers, and IT professionals who accumulate a large number of images in the course of their work.

It provides a way to manage and extract as much information as possible from a wealth of data that would otherwise remain inaccessible. That, in turn, represents a way to both accelerate discovery and generate a return on the resources already invested in collecting images and image data.

**IQbase is an intelligent database** designed especially for managing and archiving information derived from images. Unlike other products that were designed for business applications, IQbase provides accessibility from the pixel level to the meta-data level that includes supplemental information.

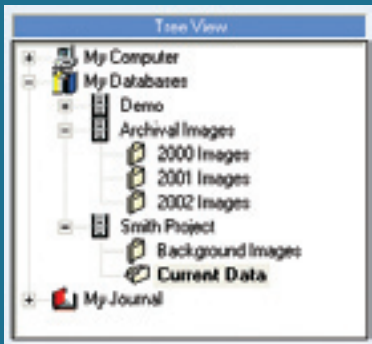
The need to manage image information at both the micro and macro level has led to the development of a new discipline called image informatics. IQbase was designed from the ground up as an image informatics solution. No other database platform of any kind offers imaging professionals such a sophisticated level of data integration, scalability, adaptability, and ease-of-use.

The image informatics revolution starts now.  
Learn more at [www.mediacy.com/iqbase](http://www.mediacy.com/iqbase)



**IQbase™**

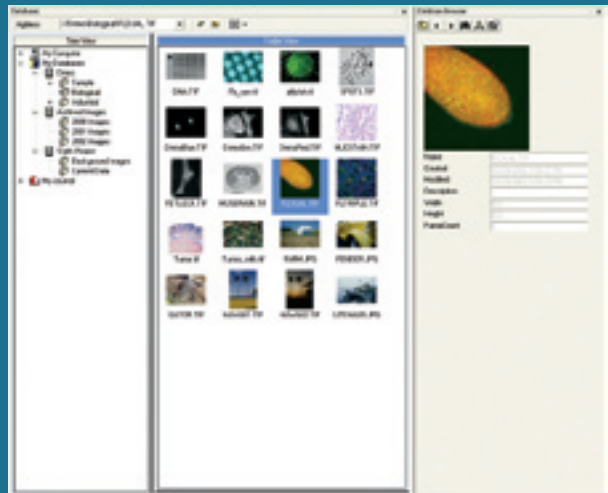




Drag and drop or import data with a flexible and familiar organizational structure.



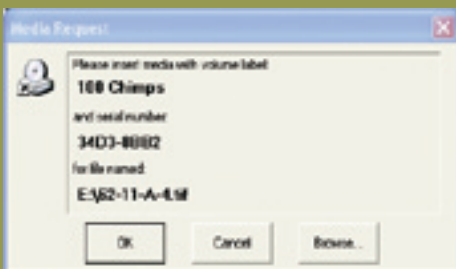
Images and image data fields (such as height, weight, size, etc.) can be viewed simultaneously.



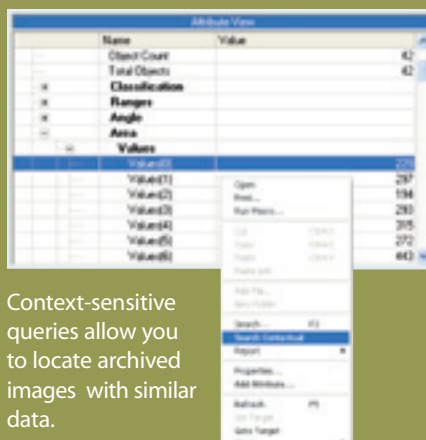
View databases, thumbnail images, and image data simultaneously for easy navigation.



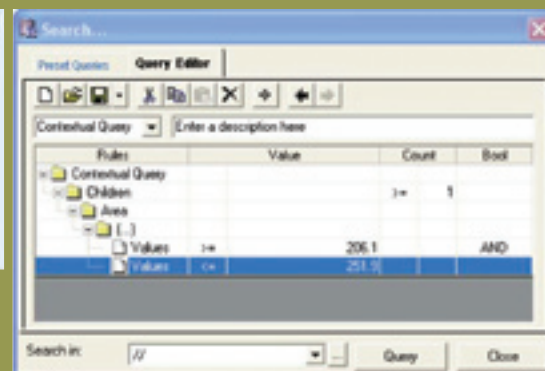
Ma



Archive and locate images stored on hard drives, removable media, or network storage.

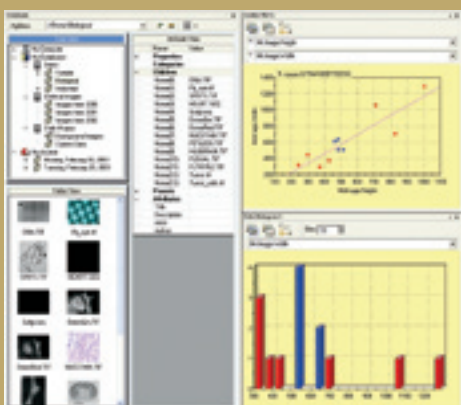


Context-sensitive queries allow you to locate archived images with similar data.



Define very precise queries, using nested hierarchical rules.

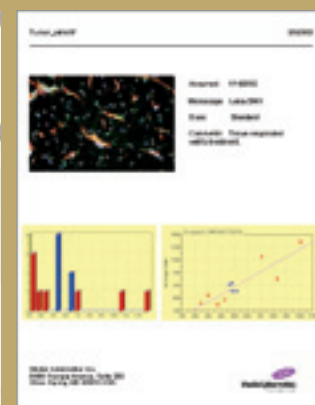
## Work the way you want to work.



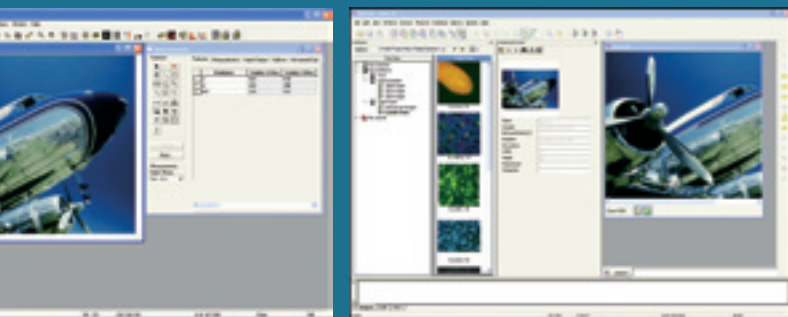
Graphically display and interact with image data to uncover insights hidden within your images and information.



Quickly create and save customized reports with easy-to-use templates.

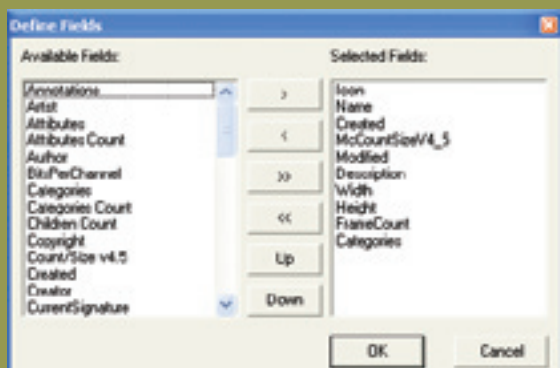


Communicate results. Collaborate



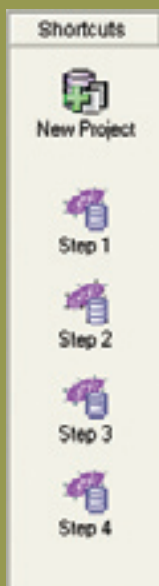
After capturing or analyzing images in Image-Pro Plus (left), you can archive those images and all related data directly into IQbase with just a single click.

## Make archiving images easier.



Customize image data fields to include only the information you need.

Create customized workflows so you can easily archive, manage, and document your projects in just the way you want to work.



## INTELLIGENT ARCHIVING

Images and data can be quickly and easily added to an IQbase database through a range of methods. Choose the method that best suits your working style.

- Automatically save your measurement data by building customized workflows that work the way you do.
- Save images and data together, rather than cataloging experiments in spreadsheets and notebooks.
- Add images as you generate them.
- Upload large volumes of existing images.
- Work seamlessly with Image-Pro Plus to automatically populate your database with information derived from analysis.

## INTELLIGENT MANAGEMENT

IQbase includes powerful tools for finding and managing images, no matter where they are physically stored.

- Locate TIF, JPEG, AVI, BMP, Dicom, PNG, TGA, and other types of archived images on hard drives, removable media, or networked storage.
- Quickly find important data by conducting and saving context-sensitive queries.
- Create multiple identities to manage databases by person, project, or other criteria.
- Maintain complete security with user log-ins and passwords.
- Adapt to your workflows by customizing fields, menus, toolbars, and screen layout.



Share your images and related data via the Web.

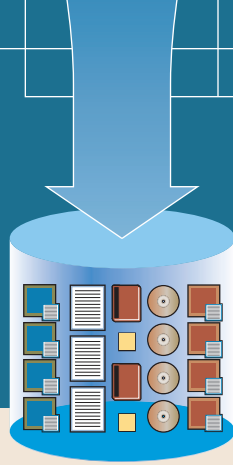
## INTELLIGENT DISCOVERY

IQbase helps you accelerate your pace of discovery and collaborate more effectively with your colleagues.

- Unlock knowledge by exploring and analyzing large volumes of image data.
- Quickly and easily share images and associated information with colleagues.
- Send images using your preferred e-mail client or publish them to the Web – directly from IQbase.
- Publish reports in a range of formats, including Adobe® PDF, RTF, Microsoft® Word compatible, and HTML.

## Collaborate with colleagues.

# IQbase™



The Dynamic Way To Archive,  
Manage, And Mine Images  
And Information

## Intelligently Stores All Your Image Data

IQbase tracks all your images and related data, no matter where they're physically stored.

- Store and retrieve both images and related data, including measurements.
- Dynamic field allocation adds fields automatically.
- Corrupt records can be deleted without recompiling.
- Store data in the database or as a pointer to another location.
- Save all your preferences and settings to use next time.
- Retrieve images from hard drives, removable media, and other sources.
- Manage images in storage area networks and network-attached storage across your entire enterprise.

## Works The Way You Want To Work

Customize IQbase to fit your projects and your working style.

- Create unique identities for different users, projects, etc. by reconfiguring shortcuts and screen layouts.
- Add your own data fields to reflect the type of work you do and the images you use.
- Build macros to automate workflows and processes.
- Use the language that is most comfortable: English, German, French, Spanish or Chinese.
- Extend the interface and capabilities with Microsoft® Visual Basic® for Applications.



## Drives Discovery And Facilitates Collaboration

IQbase lets you expose hidden information to promote discovery and share your work with colleagues.

- Detect hidden patterns and trends even among very large numbers of images or variables.
- Filter, sort, and query images using any related information or measurements.
- Find similar results across multiple groups of images.
- Share images via e-mail or by publishing them to the Web directly from IQbase.
- Generate reports in a variety of document or Web formats.

## Supports Three Levels of Interoperability

**Desktop:** For single users working with databases that do not need to be shared.

**Small Workgroup:** For groups on a common network/intranet who need to share images and collaborate.

**Enterprise:** For organizations that need a customizable and scalable solution for sharing large volumes of image data.

## Archive Seamlessly From Within Image-Pro Plus

Image-Pro Plus image analysis software users can archive to their IQbase database automatically. After capturing or analyzing your images in Image-Pro Plus, you can archive to your IQbase fields (including count/ size, measurements, etc.), at the click of a button. This means there is no need for manual input.



## System Requirements

### Desktop:

- Intel® Pentium® III 1.0 GHz processor
- 512 MB of RAM
- Microsoft® Windows 98, ME, NT, 2000, or XP

### Small Workgroup:

- Servers with 1.0 GHz processor
- 512 MB of RAM
- Microsoft® Windows NT, 2000, or XP

### Enterprise:

- Servers with 1.0 GHz processor
- 512 MB of RAM
- Microsoft® Windows NT, 2000, or XP

## HEADQUARTERS

8484 Georgia Avenue, Suite 200  
Silver Spring, MD 20910 USA

Phone: + 1.301.495.3305  
Fax: + 1.301.495.5964  
E-mail: [info@mediacy.com](mailto:info@mediacy.com)  
Web: [www.mediacy.com](http://www.mediacy.com)

## INTERNATIONAL OFFICES

### South America:

Phone: + 55.11.4427.7803  
Fax: + 55.11.4427.9527

### Europe:

Phone: + 31.715.730.639  
Fax: + 31.715.730.640

### Asia Pacific:

Phone: + 65.6245.4965  
Fax: + 65.6245.4967

Media Cybernetics, the Media Cybernetics logo, Image-Pro Plus, and IQbase are registered trademarks or trademarks of Media Cybernetics, Inc. Neurons image on cover courtesy of Heiti Paves. Hair image on cover courtesy of Triptar Lens Company. All other trademarks are used with permission and remain the property of their respective owners. ©2003, Media Cybernetics, Inc. All rights reserved.

