

**IMAGING AND SOLUTIONS GmbH**

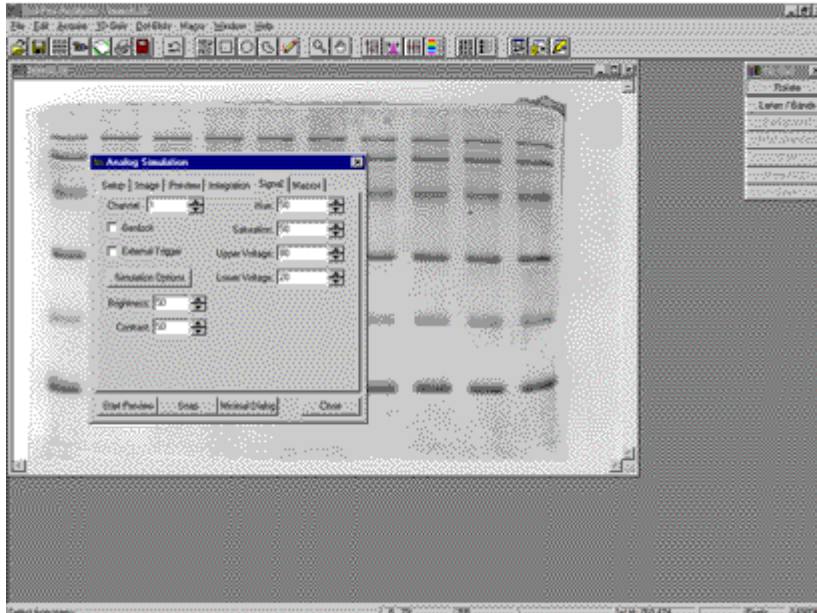
Bildverarbeitung und Entwicklungen  
für Forschung und Industrie

**Gel-Pro®**  
**ANALYZER**  
*The Proven Solution™*

"We use Gel-Pro to document and store our Western blot data and ethidium bromide DNA gels. It's so nice to pull up a fresh, clean computer-generated photo of an experiment we ran 6 months ago instead of digging through piles of faded and torn lab notebooks. This method has increased the efficiency of our lab." -- Dr. Richard Grant, University of Washington, Medical Lake, WA

Gel-Pro is now available in both 3.1 and 4.5 versions. Gel-Pro 3.1 is the "lighter" version. Gel-Pro 4.5 has all the features of 3.1 plus added functionality. See a [product comparison](#).

### Get the best measurement data



Gel-Pro® Analyzer increases laboratory productivity and efficiency by eliminating the time consuming steps involved in manually analyzing Southern, Northern, and Western blots, dot and slot blots, and quantitative PCR. Gel-Pro was jointly designed by Media Cybernetics and molecular biologists for intuitive, easy-to-use analysis without compromising the features necessary to achieve meaningful results.

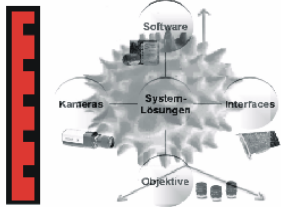
### Acquire images via world-renowned Media Cybernetics camera drivers or TWAIN

With Gel-Pro's image processing algorithms, results are often ready with the touch of just one button, eliminating the tedious trail of multiple mouse clicks necessary with other software packages. Images of wet gels, dry gels, photos, or gels on film can be acquired and analyzed automatically with Gel-Pro software.

**WEISS IMAGING AND SOLUTIONS GmbH**

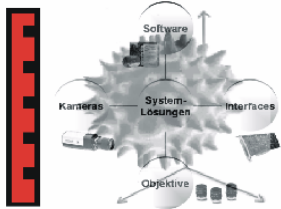
Neufeldstrasse 10 / II  
D - 85232 Bergkirchen/Günding  
Homepage: [www.weiss-imaging.de](http://www.weiss-imaging.de)

Tel.: +49 (0) 8131 / 37 896 - 10  
Fax: +49 (0) 8131 / 66 81 39  
E-Mail: [schneider@weiss-imaging.de](mailto:schneider@weiss-imaging.de)



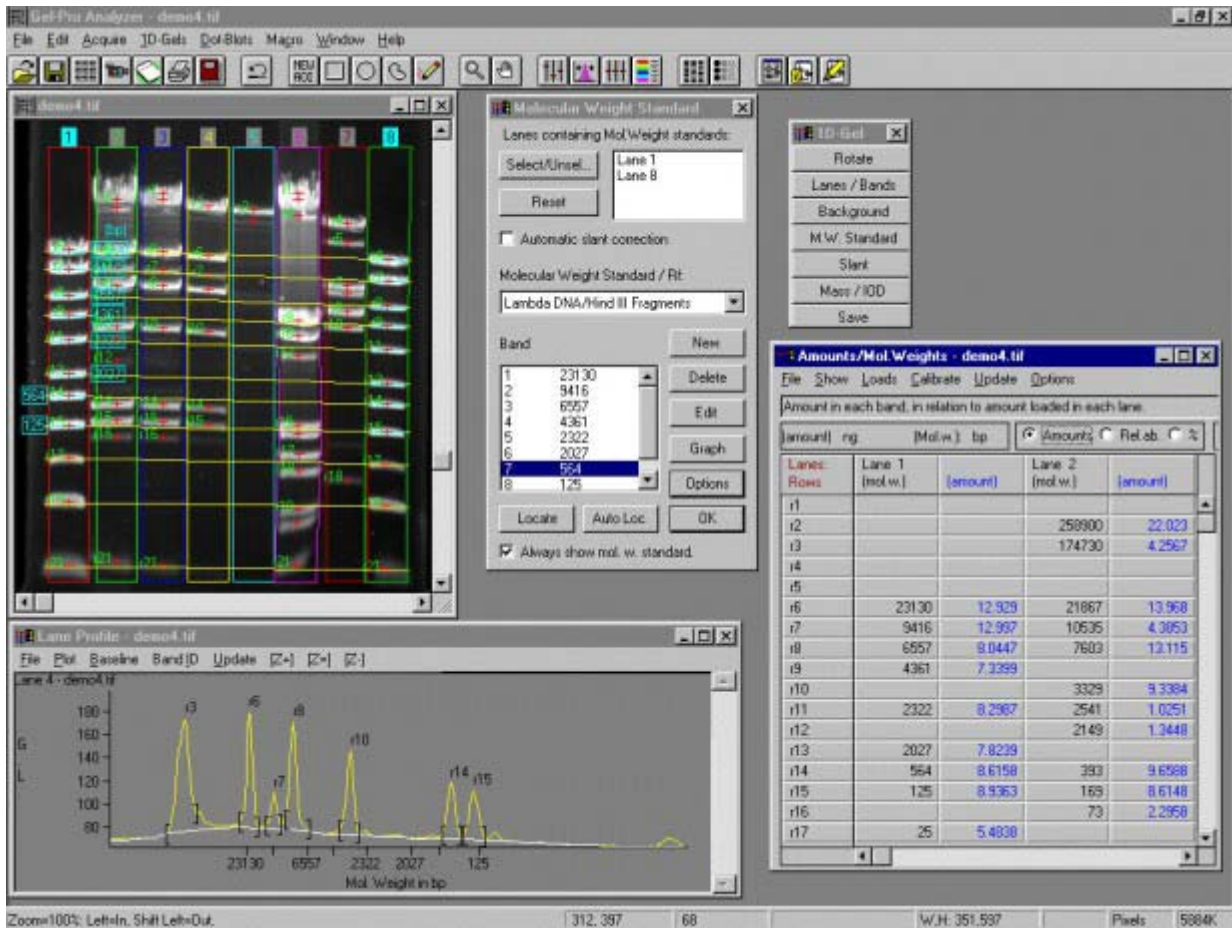
## Major Features of Gel-Pro Analyzer (versions 3.1 and 4.5)

- Understandable user interface based on actual laboratory protocols and terminology
- Automatic identification of lanes and bands in an image
- Multiple standard lanes and automatic slant detection
- Analysis correction for irregular gels
- Saturation warning for images overexposed during capture
- Binning of dot/blot array data with statistical and quantitative analysis
- Experiment recording and replay with easy-to-use macro tools
- Output experiment results from Gel-Pro straight to MS Excel or other DDE supported applications
- Experiment library and laboratory notes management features ease experiment record keeping
- Email or use FTP to transfer images directly from within Gel-Pro
- Report generator for formatted reports
- 12- and 16-bit image and scanner support
- Complete hard copy documentation and on-line help
- Image Database. The image database allows easy and efficient capture, storage, and retrieval of images and includes the following features:
  - Allows users to view thumbnails of images
  - Saves extensive information with each thumbnail
  - Provides user customizable fields for image information
  - Can organize and search thumbnails by any database criteria
  - Includes macro support, compatible with Gel-Pro macro creation utilities
- Vast Image and Data File Format Support
  - Read and write files in TIFF, HPP, BMP, CUT, EPS, JPG, Photo CD, PCT, PCX, TGA, and FLAT (Binary)
  - Convert files to and from all the above formats
  - Supports 1, 8, 12, 16, 24, and 32 bit floating point images
  - JPEG, LZW, RLE compression supported
  - Batch convert files
  - Output data files to ASCII, WK1, or XLS as input for spreadsheets
  - Transfer images, data graphs, and data files via DDE or Clipboard
- High quality support. Please visit our [Technical Support](#) policies page for details.



**IMAGING AND SOLUTIONS GmbH**  
 Bildverarbeitung und Entwicklungen  
 für Forschung und Industrie

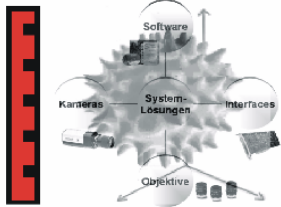
## Gel-Pro Analyzer Version 4.5



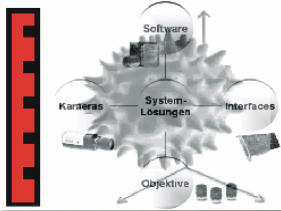
Gel-Pro data analysis window. Click on image for more detail.

## Gel-Pro Analyzer version 4.5 includes the following additional features not found in version 3.1:

- General
  - Non-destructive annotation overlay
  - User defined color assignment
  - 3-D surface plot to aid data interpretation
  - Full support for acquisition of sequences and extraction of frames for analysis
  - Undo buffer
  - Recovery of analysis progress from inadvertent computer power loss
  - Support for GLP/CFR 21 Part 11 Compliance via audit trail and image/file signature *..New in v4.5*



- Lanes
  - Option for non-uniform lane width; individual lanes may be different widths
  - Active lane in profile is outlined boldly both on the image and the profile which aids the user when many lanes are displayed
- Bands
  - Interactive band height sensitivity to aid in proper automatic band finding
  - Define band pattern to achieve better band resolution for closely-spaced, distorted bands
  - Bands within rows may be determined by MW or Rf
  - Band extents may be edited via handles on the profile or on the image overlay
  - User may select position for band labels for optimum clarity
  - Correct for misshapen bands to give better resolution **..New in v4.5**
- Lane Profile
  - Bands may be indicated by peak position or center of mass
  - Lane bitmap may be displayed under the profile to aid interpretation
  - Bands may be indicated by brackets, dotted lines or cross-hatching
  - Band indicators are arrows to pinpoint band position
  - X and Z scale zooming for close examination
  - Easy cycling and selection of the lanes via the profile dialog display
- Background
  - New rolling disk algorithm
  - Option to display image with background subtracted to let the user visualize whether a correct background method has been applied
  - Interactive feedback of results as the methods and parameters are changed to optimize results
- Quantitation/Results
  - When bands, lanes or rows are selected, the corresponding elements on the image are outlined boldly to aid user interpretation
  - Amount may be determined by the area in the profile under the entire profile or only the area within the bands
  - Supports multiple calibration curves for a single image **..New in v4.5**
  - The row band graph shows a bar chart of the amounts within a row across each lane
  - Presence/absence may be indicated matched to lane 1 via 0, 1, -1 assignment for easy typing
- Molecular Weight
  - Hyperbolic cosecant curve fitting produces more accurate MW calculation for small DNA fragments (under 1,000 base pairs) run in polyacrylamide
  - Polynomial slant fit lines may be specified to follow uneven migration more closely and give more accurate results
  - Correct for variable well origins **..New in v4.5**
- Dot/Blot
  - User may ask to have missing spots filled in automatically for a regular array when all dots are not found
  - An area filter tolerance may be specified to sort out actual spots from background contamination.
- Area Density - New Function
  - Free form or auto-trace definition of spots of interest
  - Extensive table of measurements and measurement statistics
- Colony Counting - New Function
  - Full complement of automatic and manual spot finding
  - User may edit, add, split, merge spots
  - Numerous filtering and measurement options



- Extensive table of measurements and measurement statistics
- Automatic classification by user criteria
- RichEditWindow

Gel-Pro Analyzer was developed with the input of biotechnology professionals including [Dr. Bob Farrell](#) of [Exon-Intron, Inc.](#)