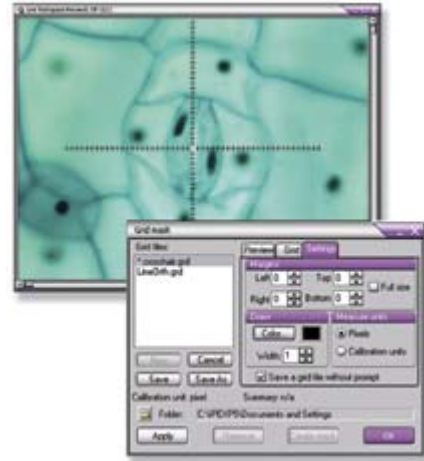


Image-Pro[®] EXPRESS

The Image Analysis Solution Ideal for Basic Imaging or Image Capture

From Images to Answers

Image-Pro Express is the cost-effective image enhancement software perfect for basic imaging or image capture stations. As the first step in the Image-Pro software series, Image-Pro Express comes equipped with the basic features needed to capture and enhance images for scientific, medical, and industrial research.



Key Benefits

- **Quick Image Capture** - Image-Pro Express is a perfect addition to your imaging station. It allows you to quickly capture and enhance images with most popular digital cameras, video cameras, scanners, microscopes, and image databases.
- **Numerous Enhancement Options** - Image-Pro Express allows you to quickly process images right at your capture station to guarantee high quality, accuracy, and reproducibility. Tools such as Extended Depth of Field (EDF) allow you to prepare images for detailed analysis.
- **Upgrade for Additional Features** - As your imaging requirements grow, you may find that you will need the power of Image-Pro Discovery or Image-Pro Plus. You can upgrade to either of these products easily and at an affordable price.

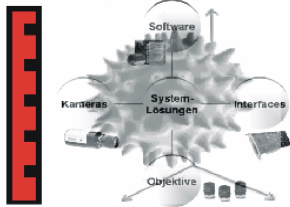
Features

- Acquire
- Enhance
- Process
- Measure
- [Analyze](#)
- Annotate
- Generate Reports
- Print and Publish
- Image Data and File Format Support

Acquire

- Acquire, create, and playback a sequence (stack) of images
- Acquire images from cameras, scanners, or electronically stored files

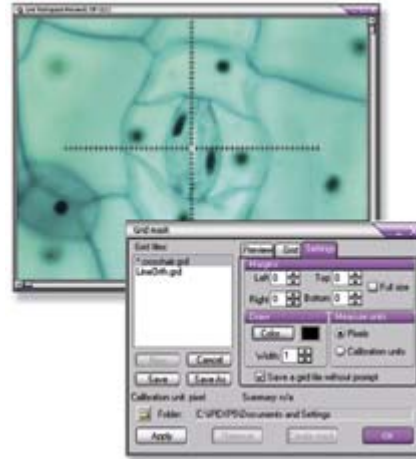




- Capture multiple images at user-specified time intervals
- Visit our driver support page for the latest list of supported acquisition hardware

Enhance

- Edit image intensity level with Display Range
- Control image Brightness, Contrast, and Gamma with Contrast Enhancement
- Enhance with Best Fit, Linear, Bell, Logarithmic, and Exponential Equalization tools
- Invert, reset, and apply contrast to images
- Use automatic image inversion
- Simultaneously view entire image in one window and a magnified area in a second window with Local Zoom
- Use Dye Manager to apply dye tints to gray scale images by choosing emission wavelength



Apply crosshair grids for precise placement of images during capture



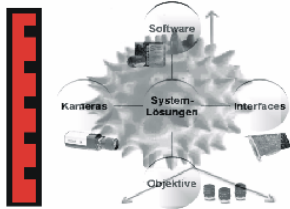
Create in-focus composite images from a series of partially in-focus images with Extended Depth of Field (EDF)

Process

- Use Background Subtraction and Correction
- Work with Enhancement filters that include Low-Pass, Hi-Pass, Gaussian, Hi-Gaussian, Sharpen, Flatten, Median, Rank, and Local Equalization
- Create in-focus composite images from partially in-focus image stacks with EDF
- Apply filters to frames in a sequence
- Apply grid masks for intercept counting
- Extract and merge multiple color channels (including RGB, HIS, HSV, and YIQ) simultaneously with Color Channel tools
- Create, print, or save a collage of several images with Mosaic Image

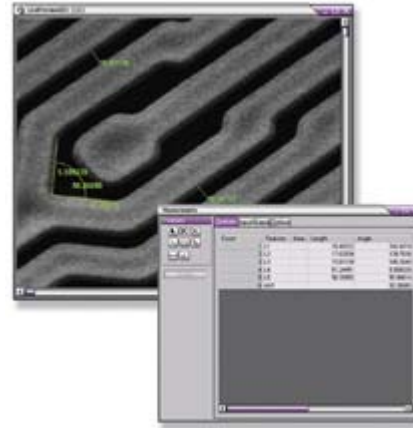


Acquire, create, and play back a sequence of images



Measure

- Calibrate intensity and spatial measurements
- Create and display spatial calibration markers
- Work with pre-defined spatial calibration units
- Outline objects automatically with Auto-Trace features
- Measure live images with Live Image Preview
- Export measurements to Microsoft® Excel via DDE



Measure images before you acquire them with Live

Analyze

- Calculate straight line, circle, irregular line, or area histograms
- Display raw data or histograms
- Define and manage multiple areas of interest
- Obtain quick distance measurements with display on the image

Annotate

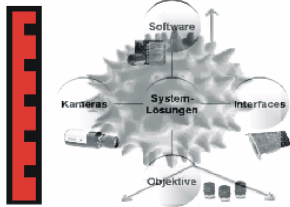
- Work with non-destructive image annotation
- Add text, simple graphics, and arrows
- Modify palette or colors

Generate Reports

- Create customized reports with images, data, and text
- Create and save report templates
- Export to [IQbase](#)

Print and Publish

- Print frames from a sequence or montage of single images with the Mosaic printing feature



- Output high quality gray-scale and color images to Windows® printers
- Experience complete control of image position on your page
- Print tiles to make poster-size prints
- Use Test Strip feature to select best output
- Use Screen Capture feature to capture an individual window, a user-defined area, or an entire screen to an image file

Image and Data File Format Support

- Read and write files in TIFF, JPEG, BMP, CUT, EPS, HDF, Photo CD, PCT, PCX, TGA, and FLF (Flat Binary)
- Read and write AVI files
- Convert files to and from the above formats
- Work with 8-, 12-, 16-, 24-, and 32-bit floating point images
- Compress images with JPEG, LZW, and RLE
- Batch convert files
- Output data files to ASCII, WKI, or XLS as input for spreadsheets
- Transfer images, data graphs, and data files via DDE or Clipboard
- Make best use of memory for images up to 64MB
- Store images on capture boards or in memory